

2016

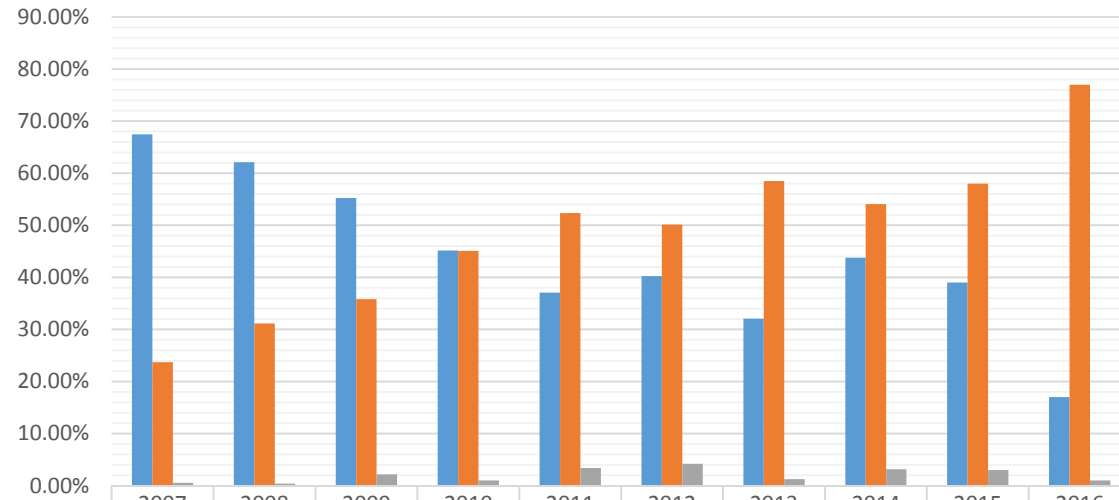
1L First Week Pizza Survey Results 2007-2016

Mendik Library

First Week Survey Results 2007 – 2016

N=260

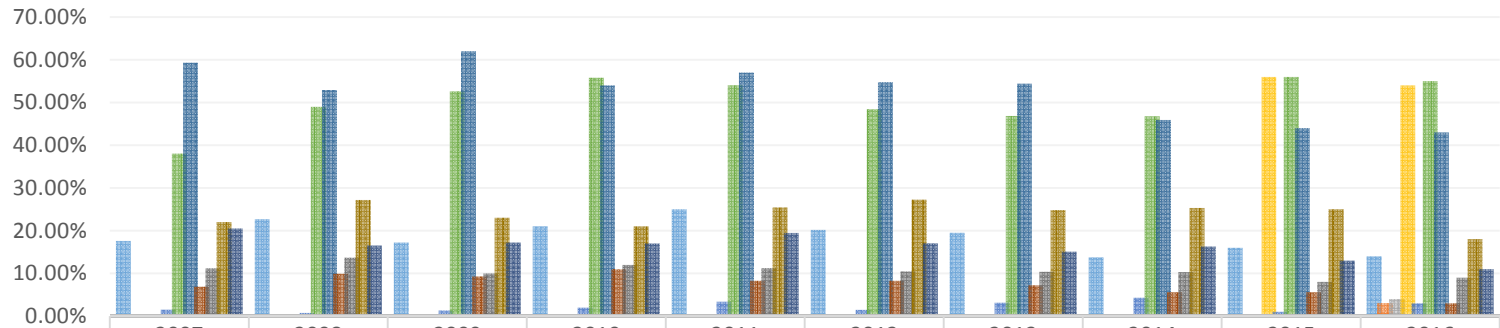
What form of electronic communication do you use most often?



	2007	2008	2009	2010	2011	2012	2013	2014	2015	2016
■ Email	67.46%	62.10%	55.22%	45.14%	37.08%	40.25%	32.08%	43.78%	39%	17%
■ iMessaging / Blackberry Messaging / Other form of Text Messaging (SMS)	23.71%	31.14%	35.80%	45.10%	52.33%	50.12%	58.49%	54.08%	58%	77%
■ Instant Messaging	0.55%	0.38%	2.17%	1.00%	3.39%	4.20%	1.26%	3.15%	3%	1%

N=260

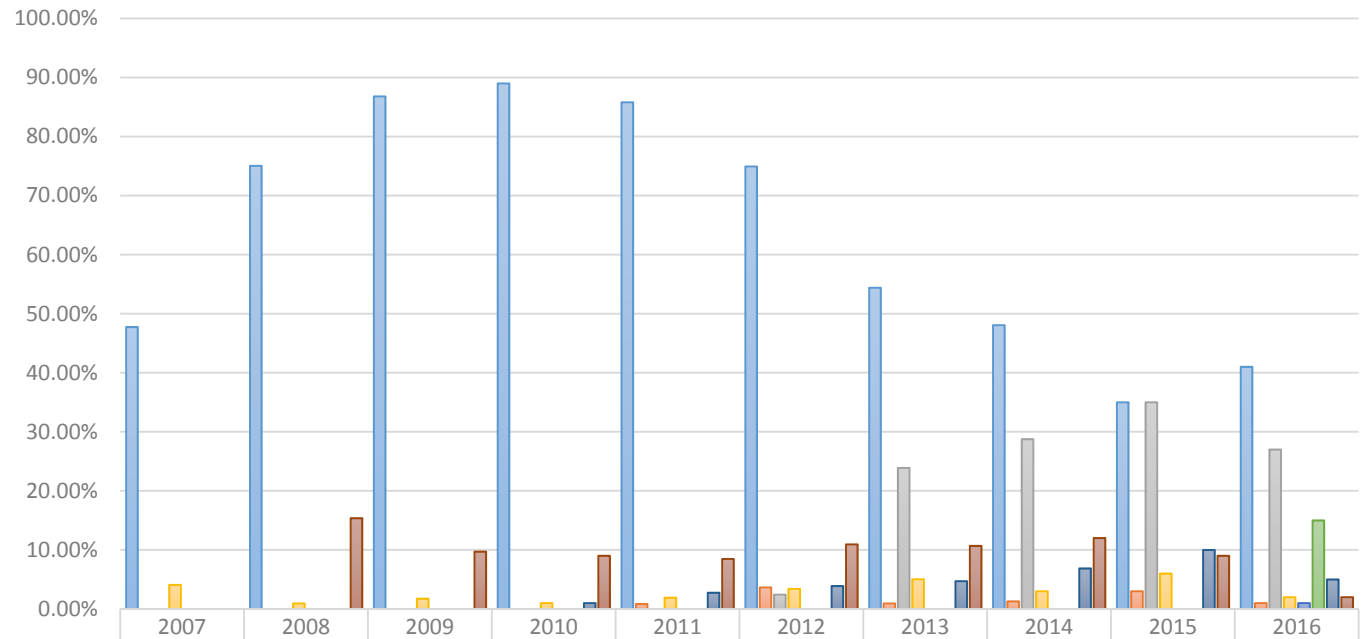
Which of the following online databases have you used prior to law school? (Select all that apply.)



	2007	2008	2009	2010	2011	2012	2013	2014	2015	2016
Academic Search Premier	17.60%	22.70%	17.25%	21.00%	25.00%	20.19%	19.50%	13.73%	16%	14%
Bloomberg BNA										3%
Bloomberg Law										4%
Google Scholar							0.00%	0.00%	56%	54%
HeinOnline	1.49%	0.75%	1.30%	2.00%	3.39%	1.46%	3.14%	4.29%	1%	3%
JSTOR	38.06%	48.97%	52.61%	55.80%	54.03%	48.42%	46.86%	46.78%	56%	55%
LexisNexis	59.33%	52.91%	62.03%	54.00%	56.99%	54.74%	54.40%	45.92%	44%	43%
Project MUSE	6.90%	9.94%	9.28%	11.00%	8.26%	8.27%	7.23%	5.58%	6%	3%
PsychINFO	11.19%	13.70%	10.00%	12.00%	11.23%	10.46%	10.38%	10.30%	8%	9%
Westlaw	22.01%	27.20%	23.04%	21.00%	25.42%	27.25%	24.84%	25.32%	25%	18%
None	20.52%	16.51%	17.25%	17.00%	19.49%	17.03%	15.09%	16.31%	13%	11%

N=260

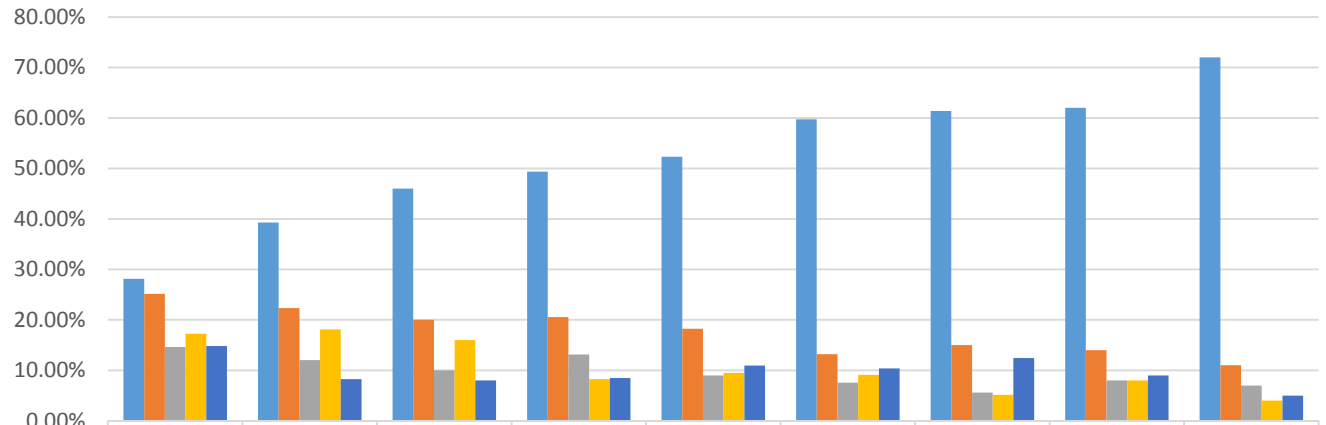
Which social networking platform do you use most often?



	2007	2008	2009	2010	2011	2012	2013	2014	2015	2016
Facebook	47.75%	75.05%	86.81%	89.00%	85.81%	74.94%	54.40%	48.07%	35%	41%
Google+					0.85%	3.65%	0.94%	1.29%	3%	1%
Instagram						2.43%	23.90%	28.76%	35%	27%
LinkedIn	4.08%	0.94%	1.74%	1.00%	1.91%	3.41%	5.03%	3.00%	6%	2%
Pinterest										1%
Snapchat										15%
Twitter				1.00%	2.75%	3.89%	4.72%	6.87%	10%	5%
None - I don't use a social networking platform	0.00%	15.38%	9.71%	9.00%	8.47%	10.95%	10.69%	12.02%	9%	2%

N=260

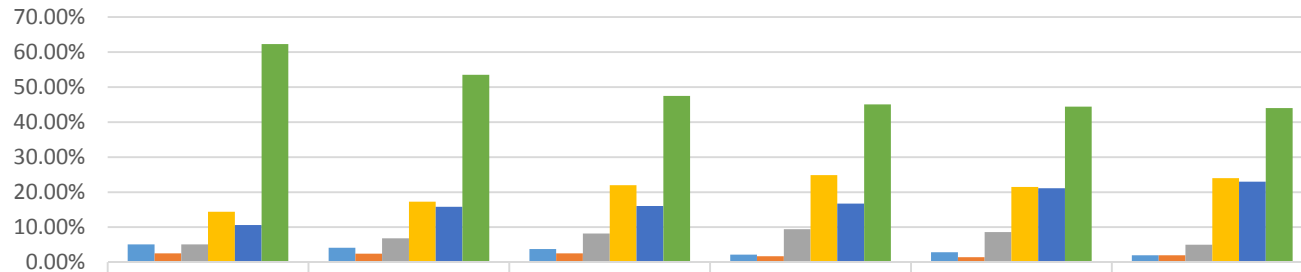
Approximately how often do you access the social networking platform you use most often? (Select one.)



	2008	2009	2010	2011	2012	2013	2014	2015	2016
more than once per day	28.14%	39.28%	46.00%	49.36%	52.31%	59.75%	61.37%	62%	72%
once per day	25.14%	22.32%	20.00%	20.55%	18.25%	13.21%	15.02%	14%	11%
a few times per week	14.63%	12.03%	10.00%	13.14%	9.00%	7.55%	5.58%	8%	7%
occasionally	17.26%	18.12%	16.00%	8.26%	9.49%	9.12%	5.15%	8%	4%
I don't subscribe to any social networking sites	14.82%	8.26%	8.00%	8.47%	10.95%	10.38%	12.45%	9%	5%

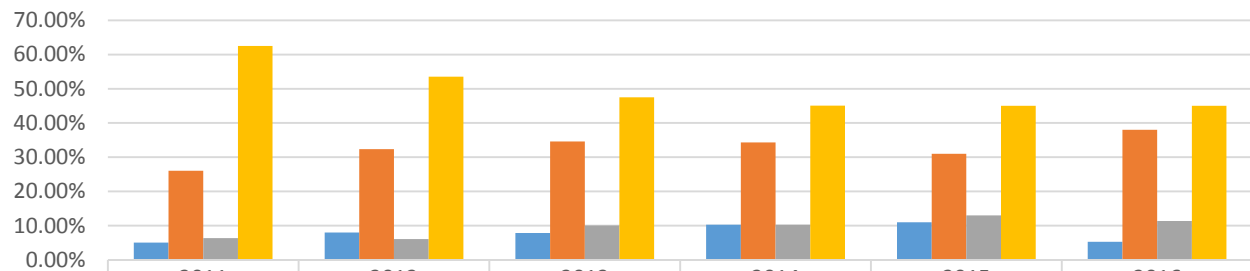
N=260

If you have a Twitter account, how many times do you tweet?



	2011	2012	2013	2014	2015	2016
more than once per day	5.08%	4.14%	3.77%	2.15%	3%	2%
once per day	2.54%	2.43%	2.52%	1.72%	1%	2%
a few times per week	5.08%	6.81%	8.18%	9.44%	9%	5%
occasionally	14.41%	17.27%	22.01%	24.89%	22%	24%
never	10.59%	15.82%	16.04%	16.74%	21%	23%
I don't have a Twitter account	62.29%	53.53%	47.48%	45.06%	44%	44%

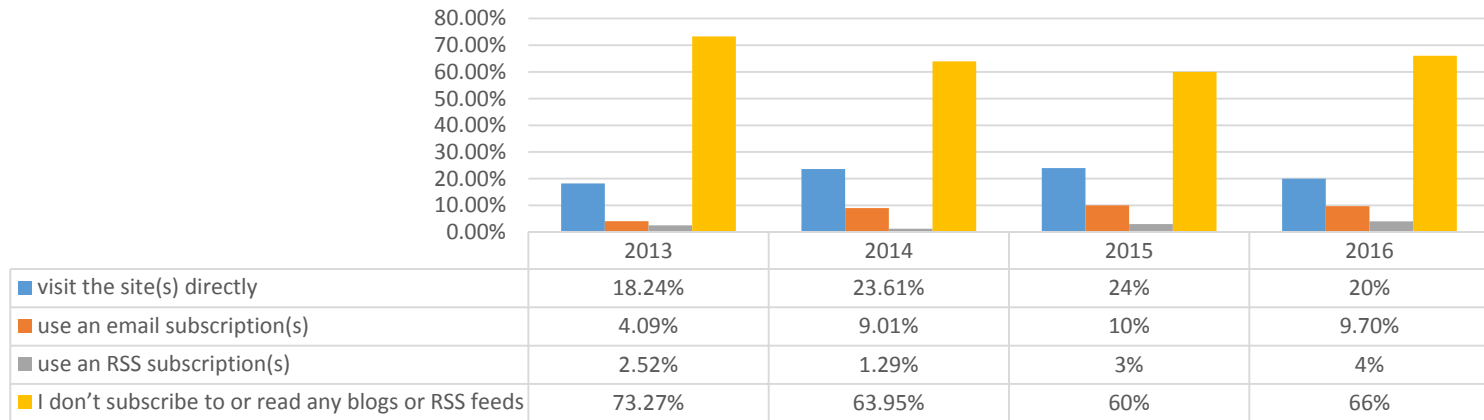
If you have a Twitter account, how many Twitter feeds do you regularly follow?



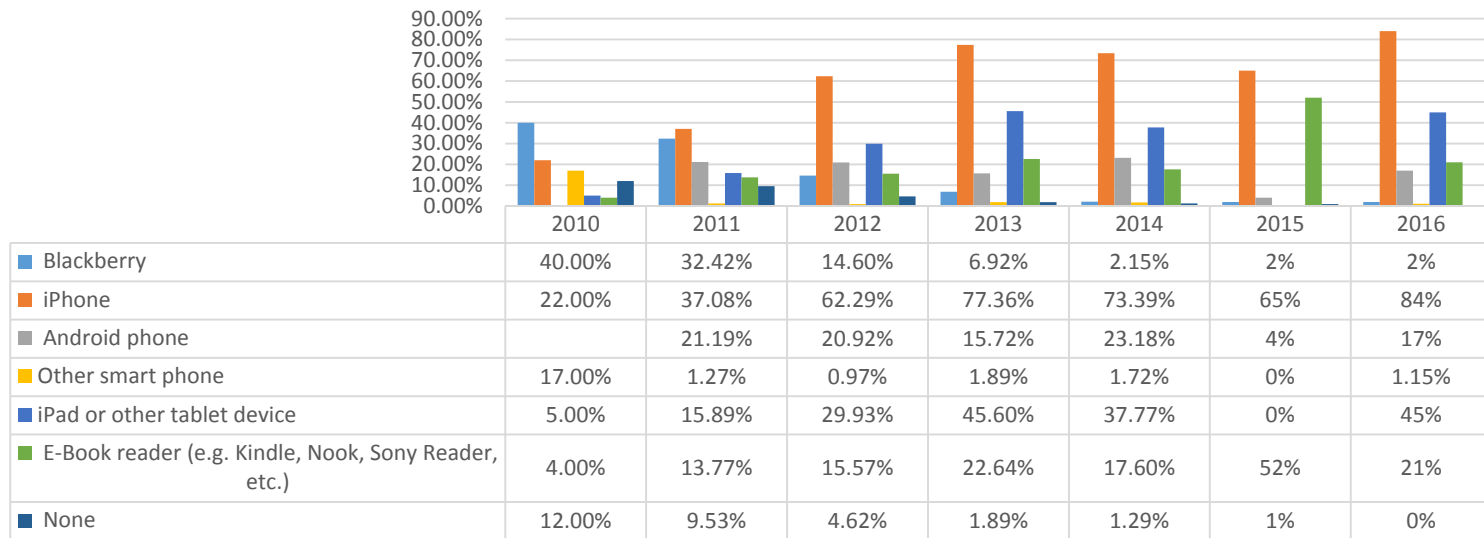
	2011	2012	2013	2014	2015	2016
1-5 Twitter feeds	5.08%	8.03%	7.86%	10.30%	11%	5%
more than 5 Twitter feeds	26.06%	32.36%	34.59%	34.33%	31%	38%
I don't follow any Twitter feeds	6.36%	6.08%	10.06%	10.30%	13%	11%
n/a - no Twitter account	62.50%	53.53%	47.48%	45.06%	45%	45%

N=260

If you subscribe to or read any blogs or RSS feeds, do you

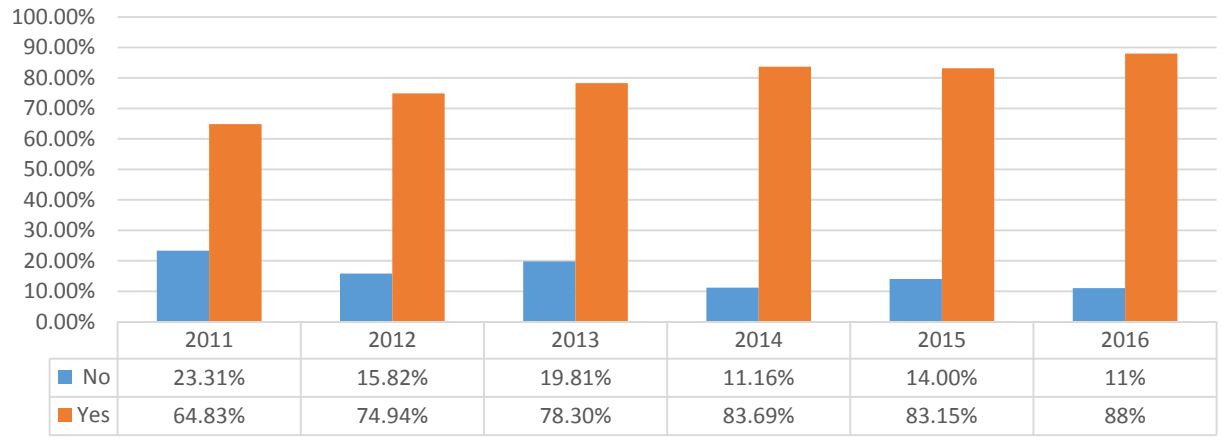


Which, if any, of the following devices do you own? (Select all that apply)

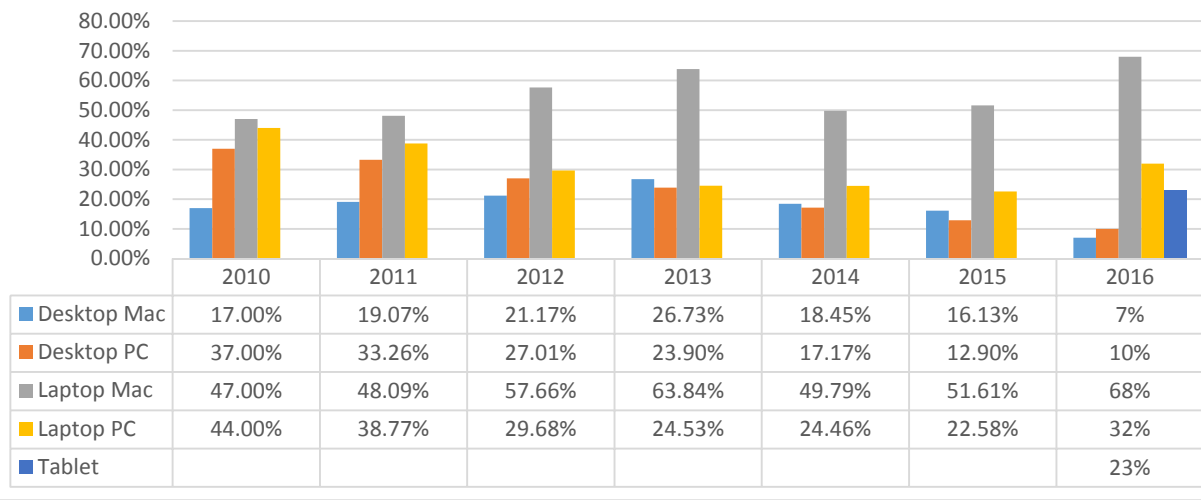


N=260

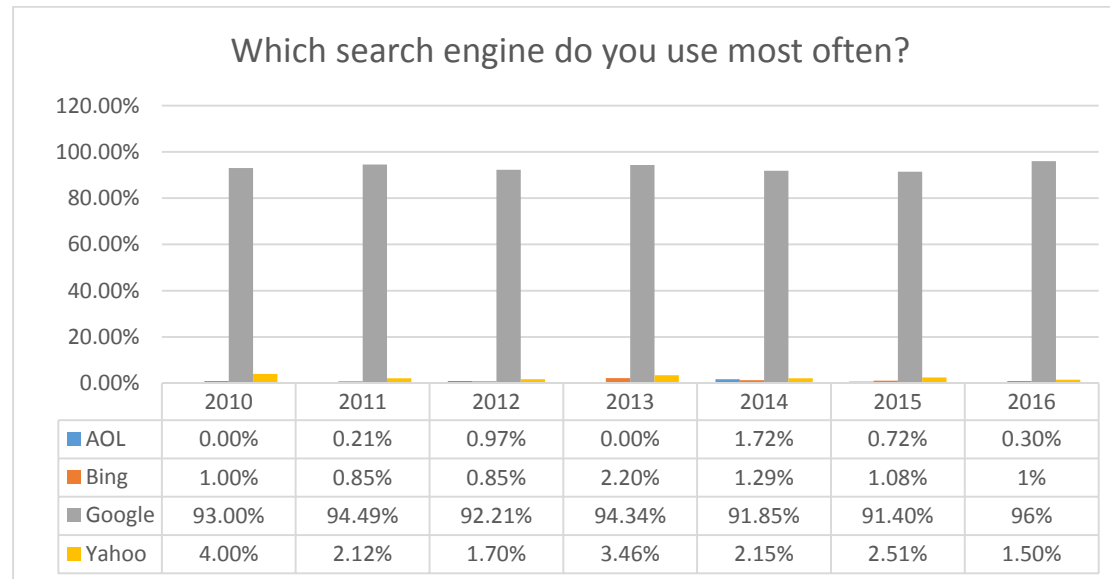
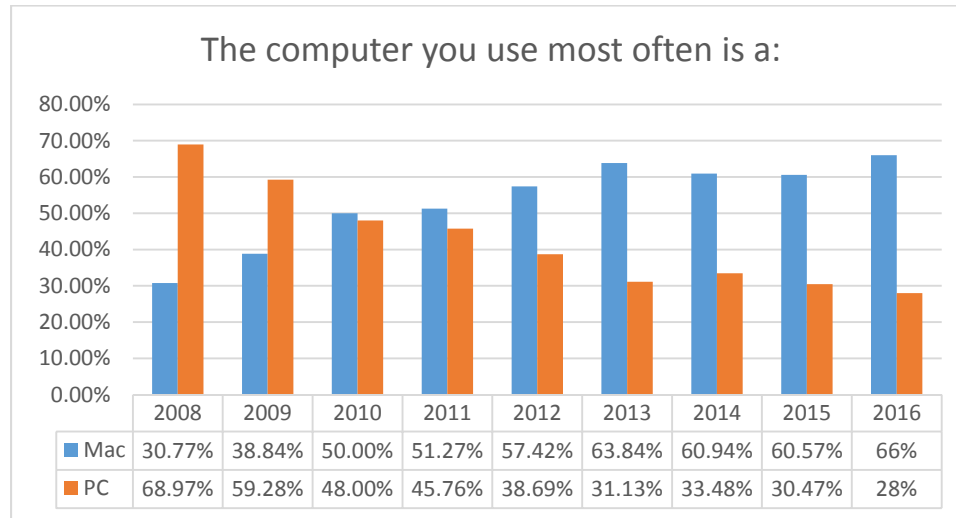
If you have a smart phone, do you anticipate using any law or law school related apps?



If you own a computer, please specify the type

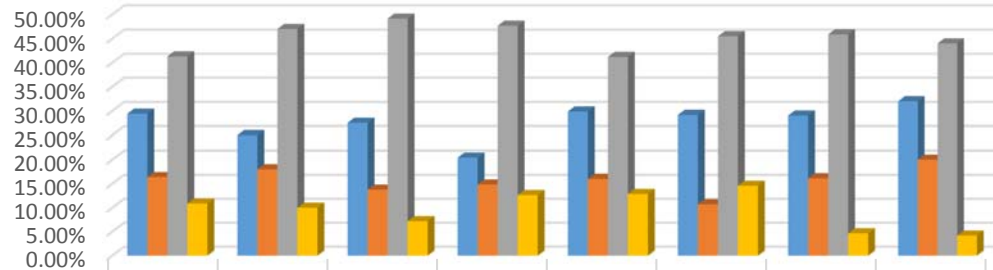


N=260



N=260

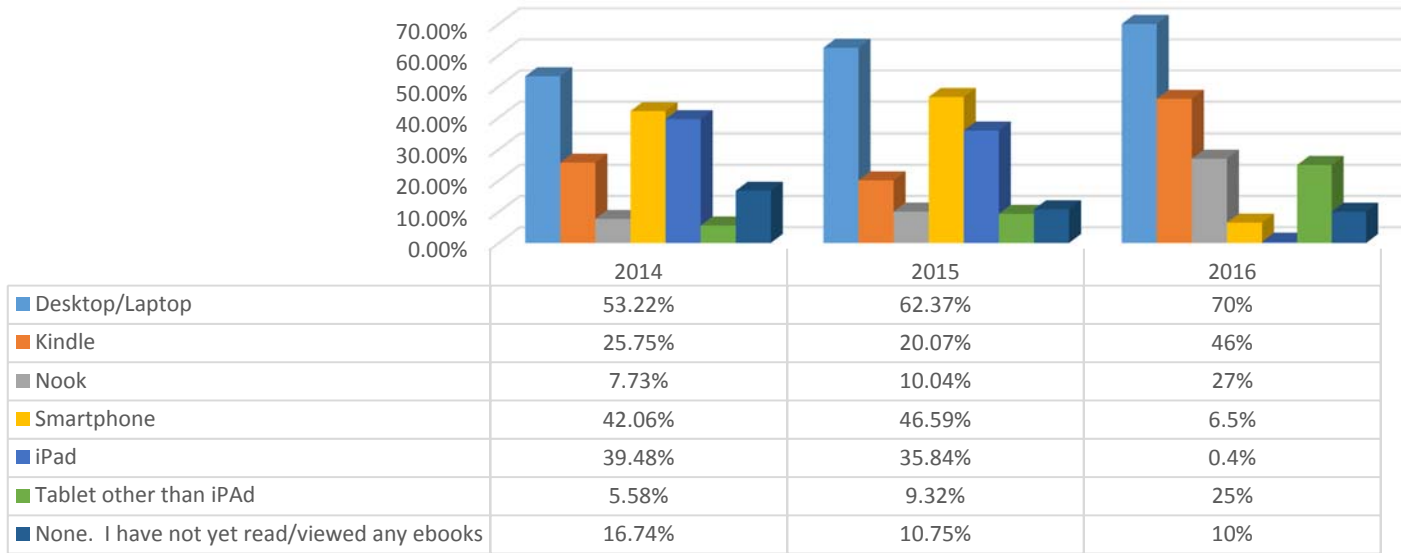
Within the past year, have you downloaded or listened to:



	2009	2010	2011	2012	2013	2014	2015	2016
1-5 podcasts / vodcasts	29.42%	25.00%	27.54%	20.44%	29.87%	29.18%	29.03%	32%
More than 5 podcasts / vodcasts	16.38%	18.00%	13.77%	14.84%	16.04%	10.73%	16.13%	20%
No podcasts / vodcasts	41.30%	47.00%	49.15%	47.69%	41.19%	45.49%	45.88%	44%
I don't know what a podcast / vodcast is	10.87%	10.00%	7.20%	12.65%	12.89%	14.59%	4.66%	4.20%

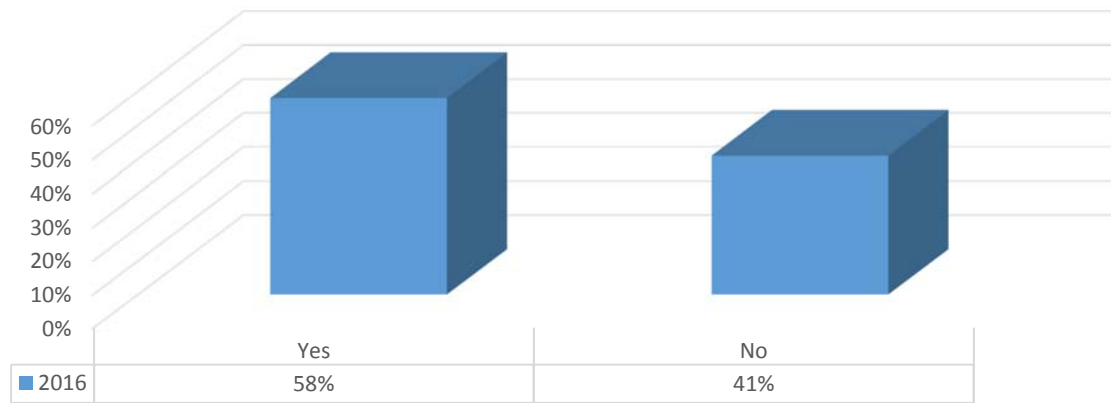
N=260

Please specify all the following devices which you have used to read/view ebooks

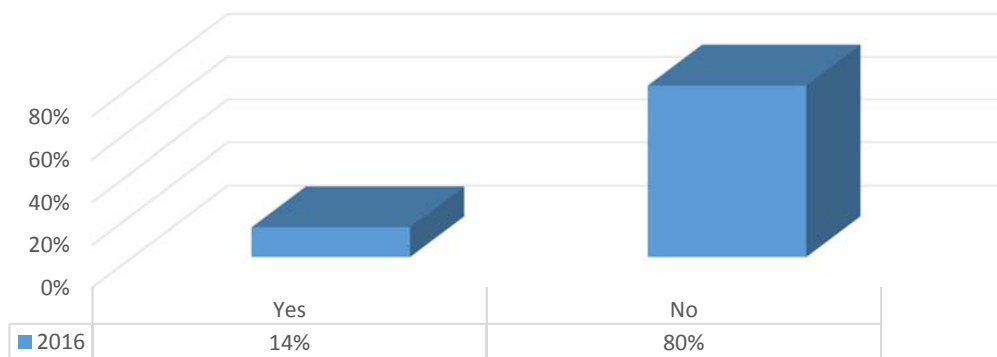


N=260

Have you previously used an e-textbook for any undergraduate or graduate school classes?



If you have previously used an e-textbook for any undergraduate or graduate school classes, did you prefer using the e-textbook to a print-textbook?



N=260

